

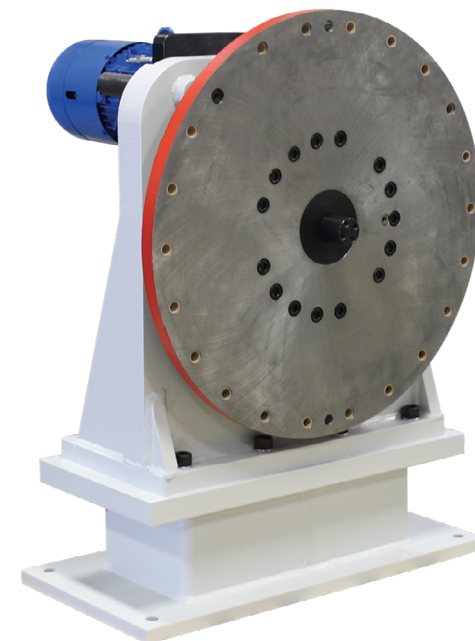
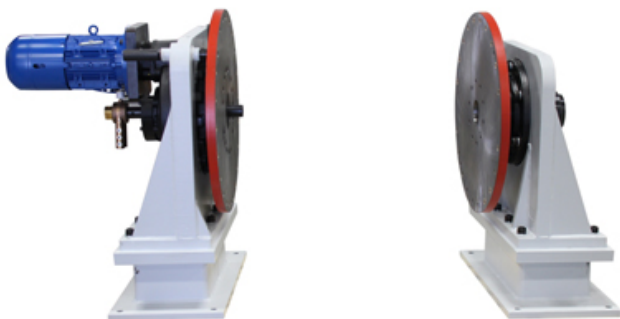
An alternative to the extremely high precision and zero backlash TMF and RT series trunnion indexing systems, the TR Series offers a lower cost alternative to applications that require such high standards.

Offered in complete head and tail stock standard sets, you have the option to purchase a complete trunnion solution that includes heavy duty constructed base frame, HS/TS riser bases, and fixture backbones.

The TR series is ideal for rollover applications in the aerospace, automotive, defense, construction and mining equipment, alternative energy and railroad transportation manufacturing environments. The TR Series was manufactured to be suited for laser, spot, mig and tig welding applications.



MOTION INDEX DRIVES



p. 248.743.9999 • f. 248.743.0749
1204 E. Maple Troy, MI 48083 • www.mid.us.com

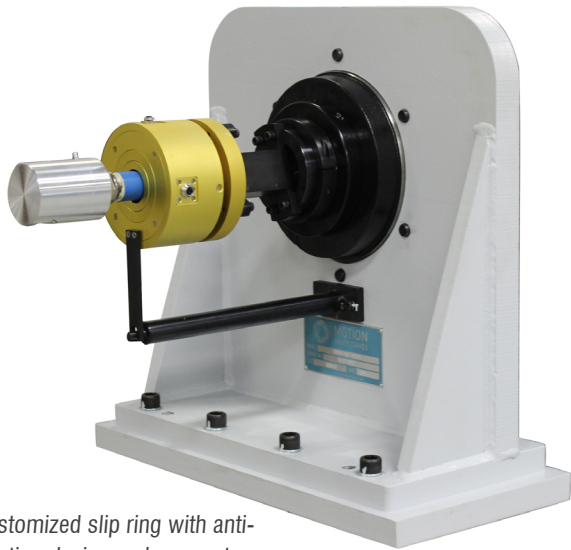


TR Series Headstock / Tailstock

Technical Benefits for End Users

Motion Index Drives' TR series headstock / tailstock trunnion sets utilize a high precision (less than 1 arc minute) planetary gear system mounted in a vertical position complete with mounting plates.

TR series Trunnion Index Drives are ideal for moving large masses with smaller units and minimizing your equipment's footprint on the floor. All TR series trunnion units can be ordered with standard or custom frames fully equipped with head and tailstock supports and one-piece base weldments.

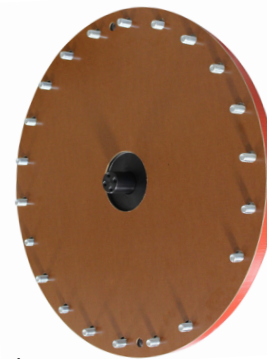


Customized slip ring with anti-rotation device and connectors to meet customers needs

- Long service lives
- Requires less power train than leading competitors
- Oversized bearings on tailstock for support
- Directly mount to gear head stock mounting plate which eliminates the need for additional pillow blocks
- Large thru hole on tailstock for running utilities to fixtures

Options Available

- Special hole patterns in mounting plates on headstock and tailstock
- Slip rings
- Rotary unions
- Various gear ratios
- Mechanical homing devices
- Variety of encoder or positioning devices
- Clockwise, counter-clockwise and oscillating index modes of operation
- Can be ordered as complete assembly with headstock, tailstock and base frame



Key Benefits

- Infinite positioning and index angle is possible
- Minimal maintenance
- Can utilize any motor required (AC motor with encoder, servo, etc.)
- Range in all sizes of index drives
- Capable of both high speed applications and high load
- Extremely compact relative to inertial load capability



Grinding Mechanism

Micarta Isolation Cap



Thru-hole



Zeroing Pin

