

Since 1970, Motion Index Drives has been constructing the most reliable indexing equipment in the world. These precise powerhouses have been the backbone of North American vehicle manufacturing and are now working to improve products in industries including aerospace, microelectronics and medicine.

With Motion Index Drives, the bottom line is that you will receive a better product; it will last longer, maintain precision, save on energy costs and give you access to Motion Index Drives' 24-hour emergency service line.



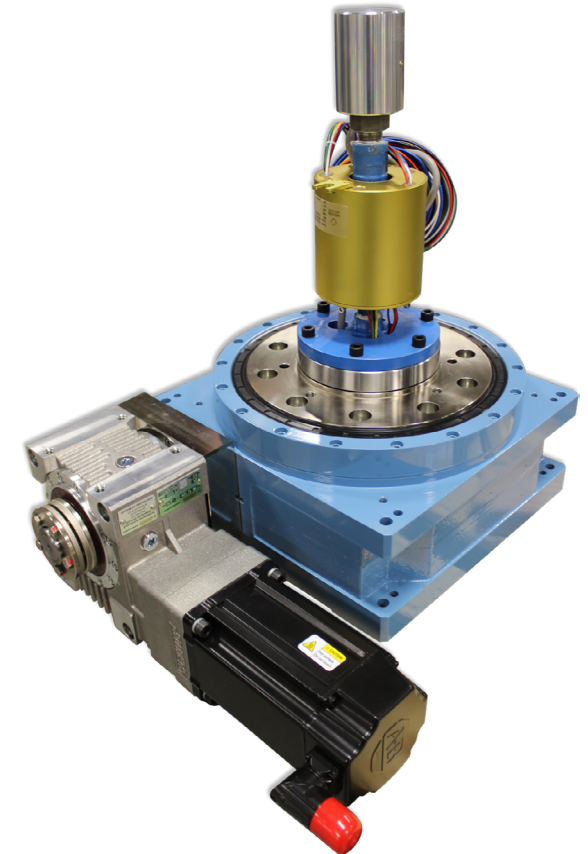
### Cam Driven Efficiency

- Precision-machined
- Low-friction internal components that require as little as 50% of the energy our competitors
- Unique flame-hardened process
- Robust housing materials
- Often maintenance-free; helping you produce a better product at lower costs for longer periods.

p. 248.743.9999 • f. 248.743.0749  
1204 E. Maple Troy, MI 48083 • [www.mid.us.com](http://www.mid.us.com)



# MOTION INDEX DRIVES

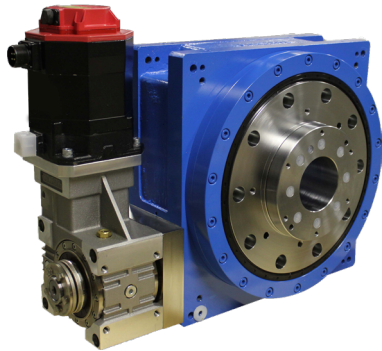


## RT Series Rotary Index Tables

## Trunnion Index Drives

These vertically mounted indexers are capable of rotating extremely large masses with smaller units and also minimize your equipment's footprint on the floor.

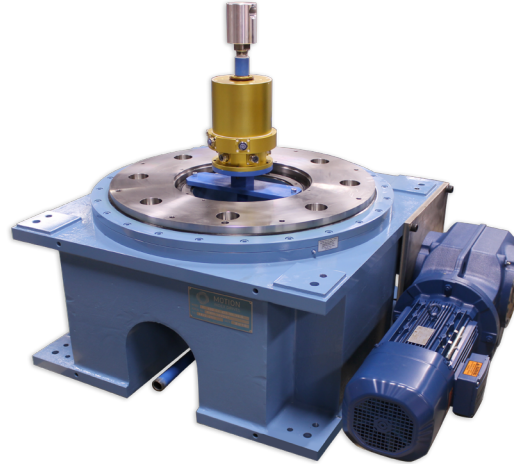
RT Series Rotary Indexers drive these powerful systems; most RT models are maintenance free and, with the inclusion of an optional Allen Bradley PLC Controller, are also completely wear free.



## Rotary Index Tables

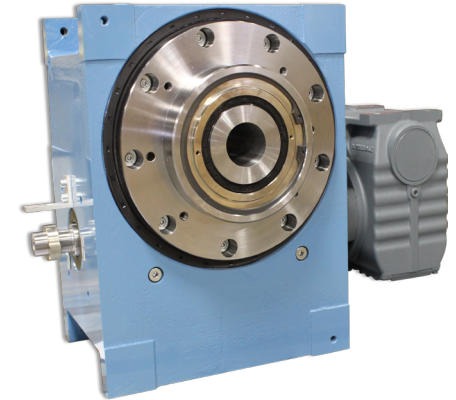
Custom made to order for your automation needs offered in a large range of sizes. RT Series Rotary Indexing Tables are offered in a fixed number of stations or as a flexible turntable with a servo motor or standard AC brake motor with encoder.

- Extremely reliable with long service lives
- High efficiency mechanical components
- Accuracies of up to  $\pm 0.008$  mm (0.0003")



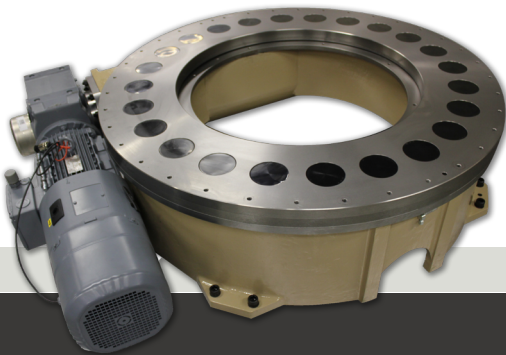
## Custom Cam Index Profiles

Right Angle Drives create an intermittent output motion in clockwise, counter-clockwise or oscillating movements. The TG Series comes standard with robust welded steel housing, making the TG Series ideal for intense environments and use.



- Multiple designs available
- Backlash free
- Capable of over 1,000 cycles per minute

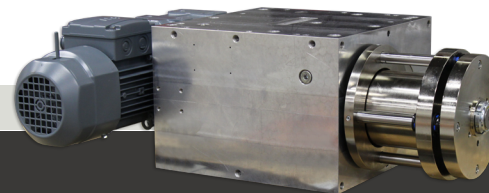
## Programmable Rotary Index Tables



- Accuracies of up to  $\pm 0.023$ mm.
- Robust construction and four-point bearing increase service lives and load capacities.
- Thin profile with a large open central space
- Tooling interface from both sides of the process.
- Fixed versions feature 4-96 stops; flexible versions are also available.

## Pick and Place Index Drives

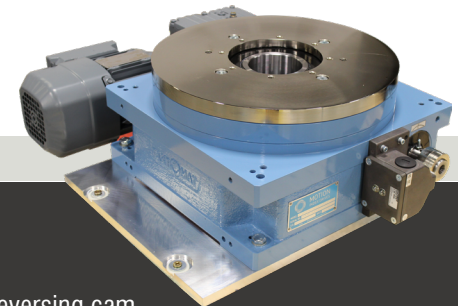
These units are ideal for high-speed and high-accuracy assembly jobs. A single gear motor controls the dial table and linear lift with synchronized cams, ensuring 100% repeatability and synchronization on every index cycle.



- Single or separate drives for lift and rotate motions
- Custom lift and rotate strokes
- Various pendulum angles and free rotation
- Custom index and dwell angles
- Accuracies of up to .0009' (0.023 mm)

## Industry Specific Indexer

Large range of standard sizes and variety of conjugate cam profiles and station counts – custom made to order based on your specific needs.



- Automatic reversing cam
- Accuracies of up to  $\pm 0.023$  mm (0.0009)
- Locking dwell for stand-alone precision
- Up to 1,000 indexes per minute

